

Eurotorc Gearbox

20-series Aluminum Handwheel Gearbox Operator

Introduction and Features

The 20-series gearbox is a 90 degree quarter turn drive device suitable for most butterfly, ball and plug valves. The aluminum alloy body has an applied static electricity powder coating that boasts strong adhesion/mechanical property and anti-corrosion/wear resistance.

- ISO5211 direct mount patterns.
- Internal lubrication.
- IP65 rated.
- Output torque range:180-5500NM.
- 0-90° rotary, $\pm 5^\circ$ angle adjusting.



Ordering code

Series Model Valve square Flange Handwheel(\varnothing)
 e.g: 20 - 070 - 11 - F05/F07 - 140

Detailed please reference selection.

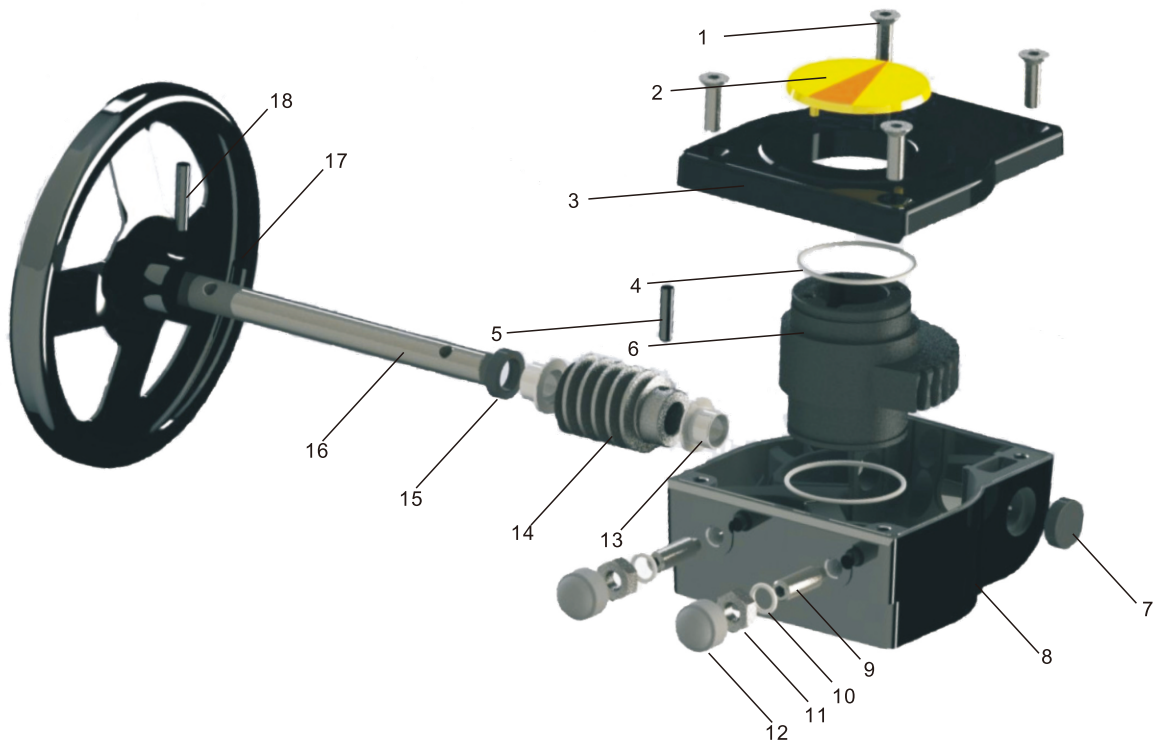
Reference Selection

Model	Square	ISO 5211 Flange Type *	Hand wheel \varnothing	Output/Input Torque Ratio	Max. Output Torque(Nm)	Butterfly valve	Ball valve	WT(KG)
20070	8/9/11/14/17	F05,F07	140	1:9.6	180	32-150	50	1.2
20090	8/9/11/14/17	F07,F09	200	1:12	300	32-200	63	2.1
20102	17/19/22	F07,F10	250	1:12.5	540	200-300	80	3.5
20125	17/19/22	F10,F12	300	1:12.5	675	250-350	100	4.8
20140	22/27	F10,F12,F14	400	1:10	1310	350-400	150	8.5
20140A	22/27	F10,F12,F14	400	1:10	1500	350-400	150	9.5
20140B	22/27/ \varnothing 50x14	F10,F12,F14	600	1:11	1790	400-450	200	11
20165	36/ \varnothing 50x14	F16	600	1:19	3250	450-500	250	17.5
20254	\varnothing 60x18/ \varnothing 65x20/ \varnothing 80x22	F16,F25	700	1:19	5500	600-650	300	28
PS070	8/9/11/14	F05,F07	140	1:9.6	150	32-150	50	1

*PS Series Cover and Body is Engineer Plastics

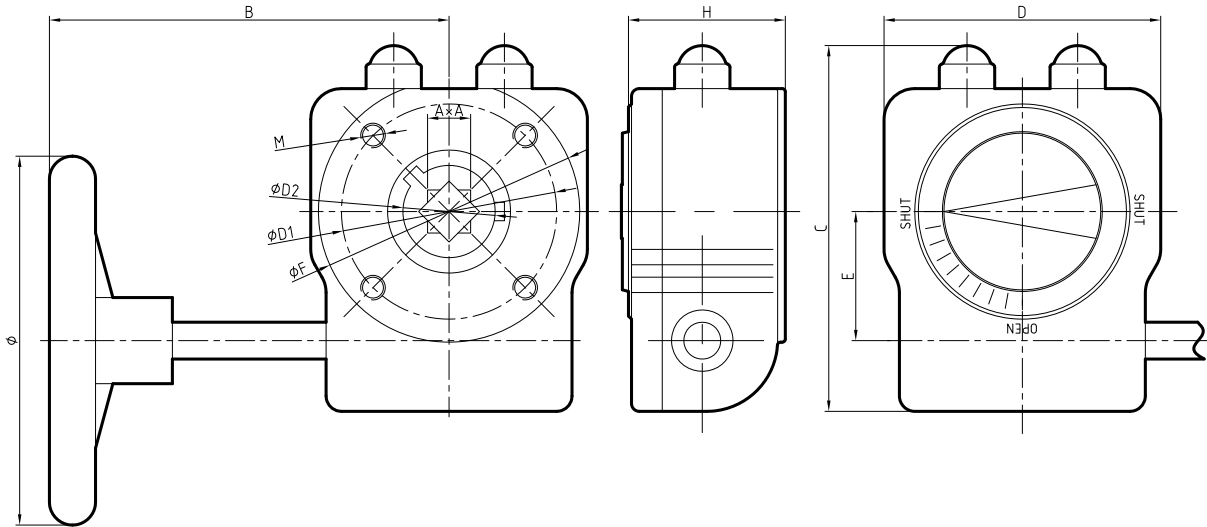
*ISO 5211 Flange single option but not both:F12 or F14,F14 or F16

Material and part list



NO.	Item	QTY	Material
1	Bolt	4	Stainless steel
2	Indicator	1	ABS resin
3	Cover	1	Aluminium polyester coating(20 Series) Engineering Plastics(PS Series)
4	O-Ring	2	NBR70
5	Pin	1	Spring Steel black
6	Worm gear	1	Ductile iron
7	Rearseal	1	NBR70
8	Body	1	Aluminium polyester coating(20 Series) Engineering Plastics(PS Series)
9	Adjusting Bolt	2	Steel black(Optional) SS304(Optional)
10	Adjusting Bolt Gasket	2	Galvanized steel(Optional) SS304(Optional)
11	Adjusting Nut	2	Galvanized steel(Optional) SS304(Optional)
12	Adjusting Nut Cap	2	NBR70
13	Bearing	2	Powder metallurgy
14	Worm	1	Carbon Steel 45#
15	Front seal	1	NBR70
16	Rotating shaft	1	Carbon Steel 45#(Optional) SS304(Optional)
17	Handwheel	1	Carbon steel polyester coating
18	Pin	1	Spring Steel black
	Bush	1	Carbon Steel 45#

Dimension Table



Model	Gear Ratio	AxA	Deep	B	C	D	E	F	H	Ø	ØD1	MxDeep	ØD2
20070	1:40	8×8,9×9,11×11,14×14,17×17	45	160	115	80	42	78	48	140	50/70	4-M6×10/4-M8×12	30
20090	1:37	8×8,9×9,11×11,14×14,17×17	50	160	130	100	50	97	54	200	70/90	4-M8×12/4-M10×12	32
20102	1:36	17×17,19×19,22×22	53	215	150	120	60	117	56	250	70/102	4-M8×12/4-M10×15	43
20125	1:36	17×17,19×19,22×22	65	225	180	142	60	138	69	300	102/125	4-M8×12/4-M12×18	43
20140	1:50	22×22,27×27	80	325	215	178	77.5	174	83	400	140	4-M16×24	54
20140A	1:50	22×22,27×27	90	325	225	185	80	175	95	400	140	4-M16×24	54
20140B	1:39	22×22,27×27,Ø50×14	90	375	225	185	81.0	175	95	600	140	4-M16×24	50
20165	1:55	36×36,Ø50×14	100	395	268	230	104.5	220	105	600	165	4-M20×30	65
20254	1:52	Ø60×18,Ø65×20,Ø80×22	120	416	332	265	130	286	125	700	165/254	4-M20×30/8-M16×24	80
PS070	1:40	8×8,9×9,11×11,14×14,17×17	45	160	115	80	42	78	48	140	50/70	4-M6×10/4-M8×12	30